



Byrneville Tract



83 Acres
Escambia County, Florida

Byrneville Tract

83 Acres

Escambia County, Florida

LOCATION: Northwest Florida. Century is 3.6 miles to the east. Molino is 21 miles to the south. Pensacola is 44.5 miles to the south.

DESCRIPTION: The Byrneville Tract is an ideal country home site of timber/hunting tract. The property has frontage on a paved county road with power and water available. It is heavily wooded with 40 acres of 20 year old planted pines and the remainder in natural longleaf and hardwoods. The tract has a good road system and food plots already in place. There is a small creek on the tract that could be a location for a pond. There are plenty of deer and turkey available.

ACCESS: From Century take County Road 4 west 2.8 miles and turn left onto Tedder Road. The Tedder Road Tract will be on the left side of the road in a 1/4 of a mile.

Price:\$186,750.00

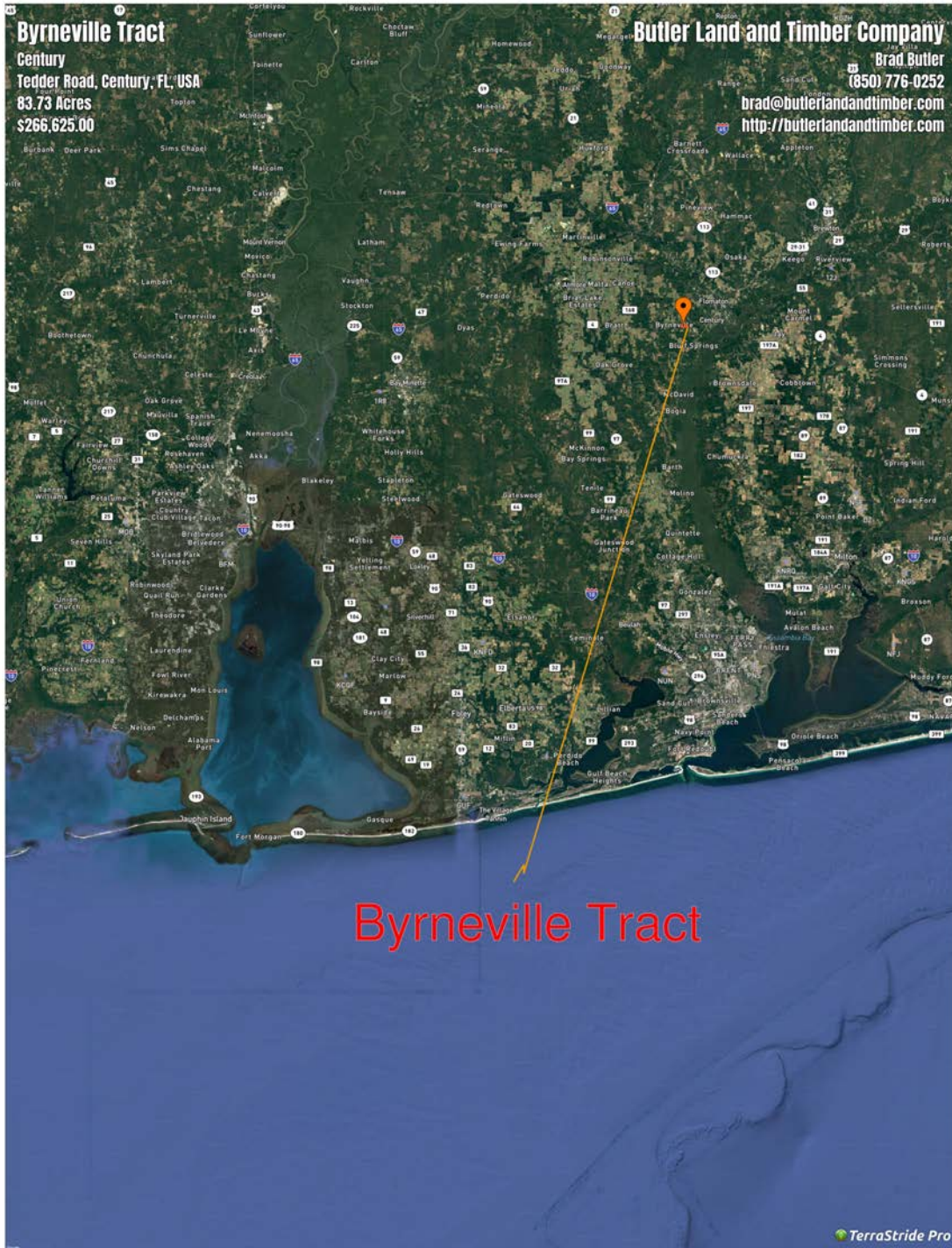
Contact Information:

F. Bradford Butler

800-704-0645

brad@butlerlandandtimber.com

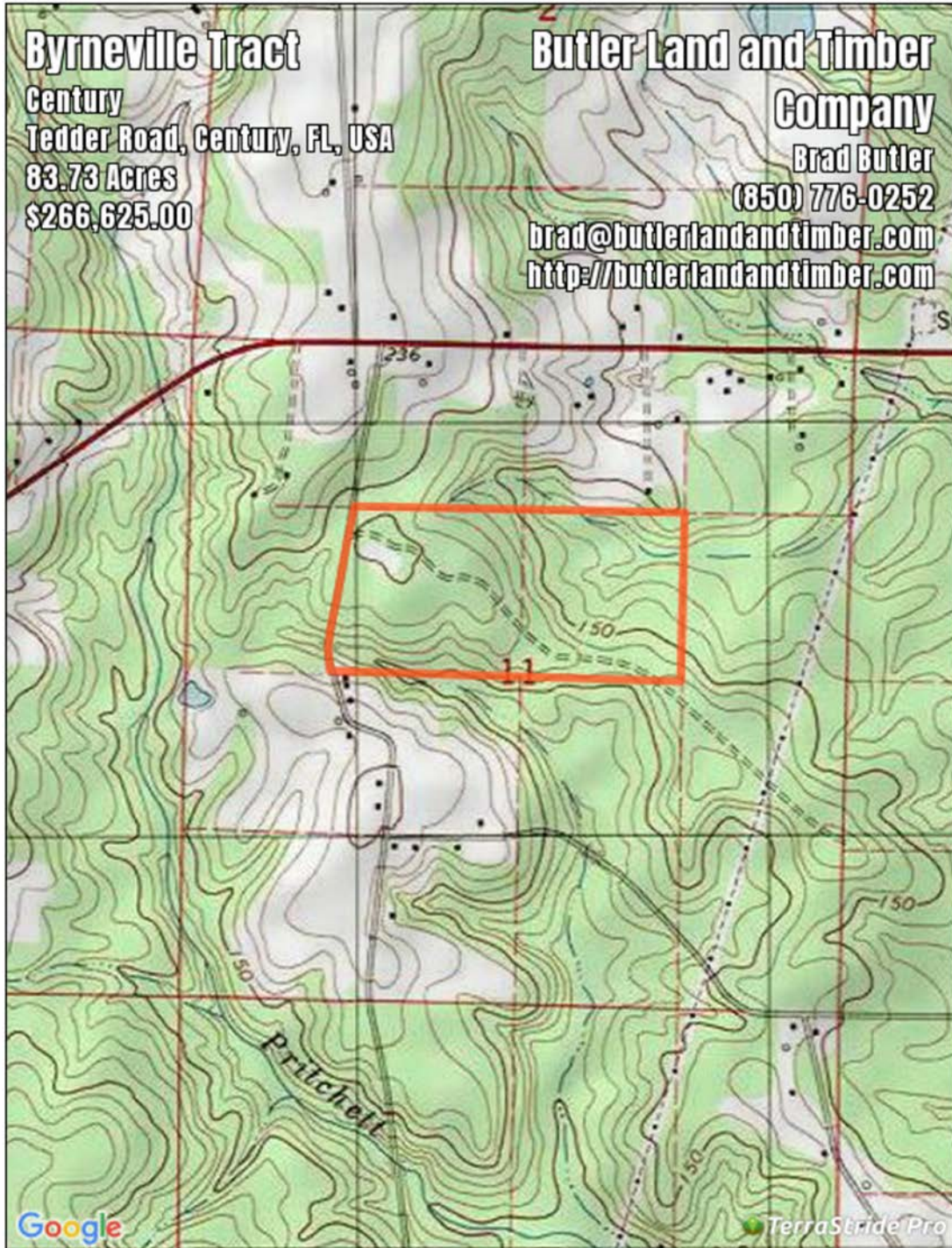
LOCATION



AERIAL



TOPOGRAPHY





Listing Broker

F. Bradford Butler

850-776-0252

brad@butlerlandandtimber.com